

Sedgwick Museum Team Charter



Sedgwick Museum
of Earth Sciences

The Sedgwick Museum Team Charter has been created by the team to enable us to effectively communicate, support and work together.

It reflects the shared individual and museum values which we uphold through our work and interactions.

Welcoming



We are welcoming when we:

- Provide a safe space for our visitors.
- Practice positive, warm, friendly and approachable attitudes.
- Are accommodating and adaptable.
- Promote access to our buildings, collections and shared spaces.

Compassionate and kind



We are compassionate and kind when we:

- Are aware of individual and team challenges and obstacles.
- Are generous with our time, knowledge, skills and resources.
- Practice active listening.
- Recognise our own needs and are sensitive to the needs of others.

Inspiring



We inspire when we:

- Are curious and strive to continually learn.
- Promote positive role models.
- Proactively share our work with knowledge, confidence and enthusiasm.
- Collaborate to bring out the best work in each other.

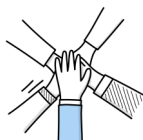
Respectful and honest



We are respectful and honest when we:

- Treat each other fairly and without bias.
- Acknowledge the contribution of others to our work.
- Listen to and reflect on the views of others.
- Are authentic in how we behave towards others.
- Foster responsibility, trust and accountability.
- Show courtesy and consideration in our interactions with others, even if we disagree with their views.
- Encourage clear, strong and timely communication.
- Ask for help.
- Are open and provide constructive feedback.

Inclusive



We are inclusive when we:

- Acknowledge and celebrate differences.
- Work across boundaries to develop relationships.
- Are open to new perspectives and experiences.
- Are well trained and proactive in challenging individual, team and institutional biases and preferences.